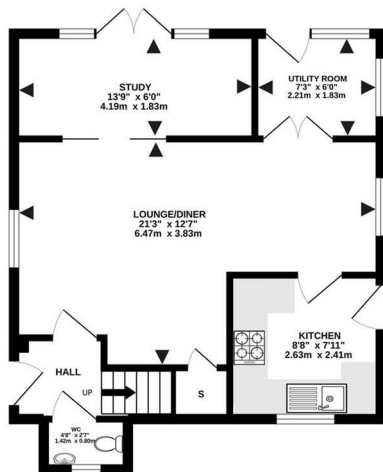
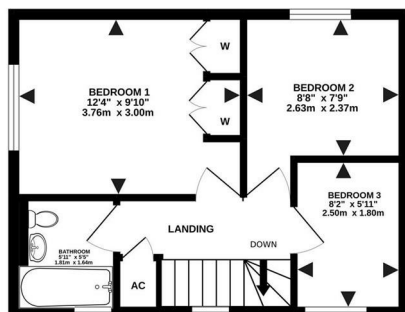




Ground Floor
474 sq.ft. (44.0 sq.m.) approx.



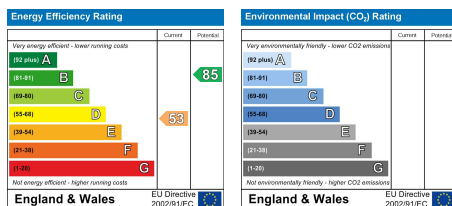
1st Floor
333 sq.ft. (30.9 sq.m.) approx.



2 Matchingfield, Kelvedon Hatch, Brentwood, CM15 0XB

Being offered for sale with no on-going chain this three-bedroom, detached family home situated in the semi-rural village of Kelvedon Hatch. The property comprises of three bedrooms, bathroom, reception room, study and kitchen along with a separate utility room.. A low maintenance rear garden is fully paved and is quite secluded, with the property further benefitting from a detached garage with power and light connected.. Viewers will note that Kelvedon Hatch is situated approximately 15 minutes' drive to Brentwood Town Centre with its mainline station and the recently opened Elizabeth Line offering quicker journey times into London and Heathrow Airport, and the High Street offering a selection of shops and restaurants, along with a selection of several well-regarded schools, both primary and secondary.

Guide Price £435,000



SERVICES:

Local Authority: Brentwood
Council tax band: E
Post code: CM15 0XB

VIEWING:

Strictly by prior arrangement with Keith Ashton Estate Agents

OPENING HOURS:

Monday to Friday: 8.45AM - 6.30PM | Saturdays: 9AM - 5.30PM | Sundays: 10AM - 2PM

MORTGAGE INFORMATION:

We offer the additional facility of an in-house Independent Financial Adviser who will access all mortgage lenders with the purpose of providing you with the benefit of choice. For quotations or comparables please call 01277 375757 or visit our interactive website at www.mortgagebusiness.net



We the Agent have not tested any apparatus, fittings or services for this property. The plot size is intended merely as a guide and has not been officially measured or verified by the Agent. Photographs are for illustration only and may depict items which are not for sale or included in the sale of the property. As part of the service we offer we may recommend ancillary services to you which we believe may help you with your property transaction. We wish to make you aware, that should you decide to use these services we will receive a referral fee. For full and detailed information please visit 'terms and conditions' on our website www.keithashton.co.uk

Brentwood
Tel. 01277 260858

Village Office
Tel. 01277 375757

Lettings Office
Tel. 01277 202200

Explore more @ www.keithashton.co.uk

